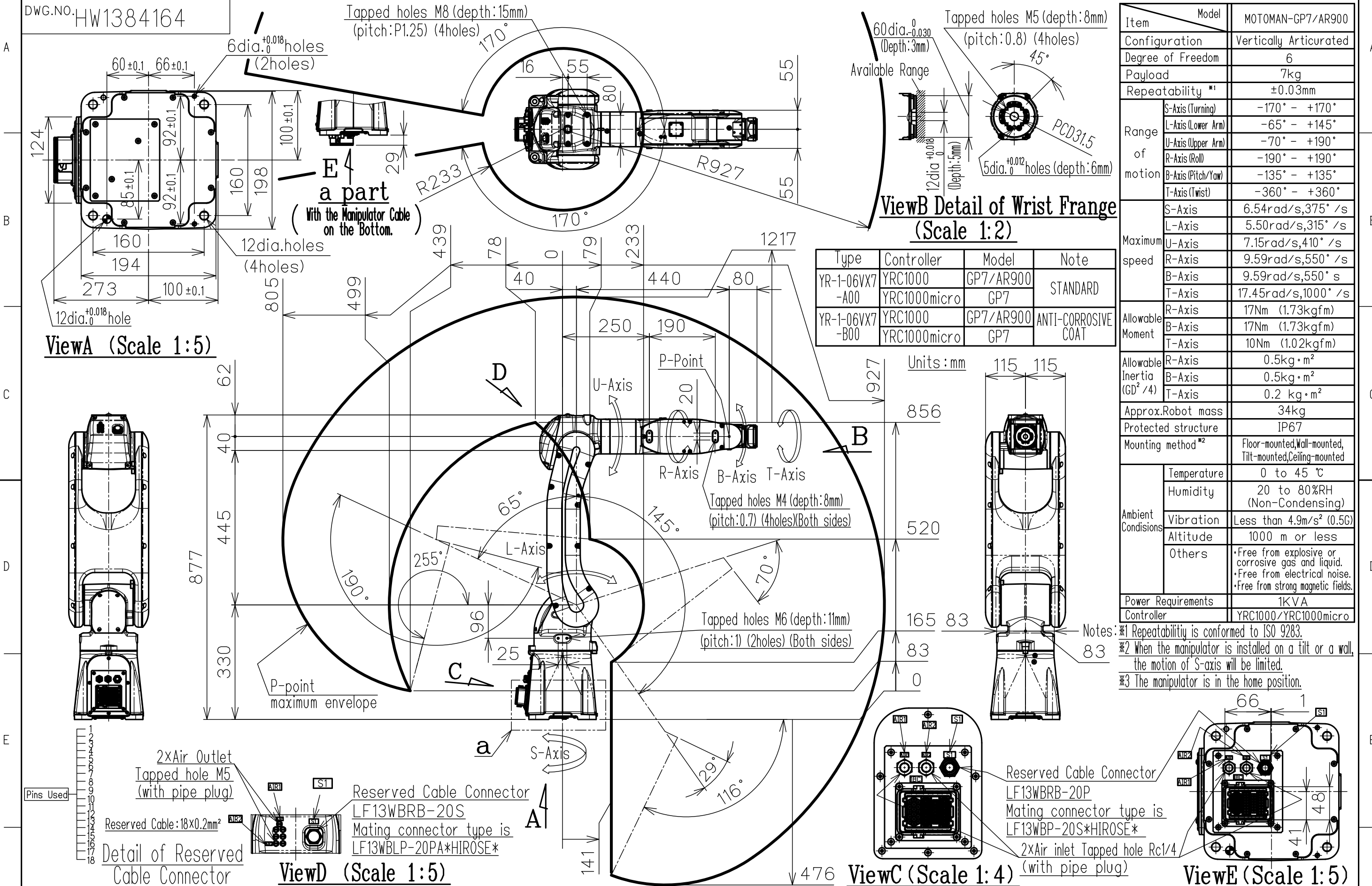


DWG.NO. HW1384164



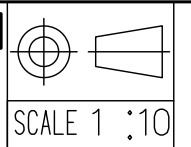
Item	Model	MOTOMAN-GP7/AR900
Configuration	Vertically Articulated	
Degree of Freedom	6	
Payload	7kg	
Repeatability *1	±0.03mm	
Range of motion	S-Axis (Turning)	-170° - +170°
	L-Axis (Lower Arm)	-65° - +145°
	U-Axis (Upper Arm)	-70° - +190°
	R-Axis (Roll)	-190° - +190°
	B-Axis (Pitch/Yaw)	-135° - +135°
Maximum speed	S-Axis	6.54rad/s, 375° /s
	L-Axis	5.50rad/s, 315° /s
	U-Axis	7.15rad/s, 410° /s
	R-Axis	9.59rad/s, 550° /s
Allowable Moment	R-Axis	17Nm (1.73kgfm)
	B-Axis	17Nm (1.73kgfm)
	T-Axis	10Nm (1.02kgfm)
Allowable Inertia (GD <sup>2</sup> /4)	R-Axis	0.5kg·m <sup>2</sup>
	B-Axis	0.5kg·m <sup>2</sup>
	T-Axis	0.2 kg·m <sup>2</sup>
Approx. Robot mass	34kg	
Protected structure	IP67	
Mounting method *2	Floor-mounted, Wall-mounted, Tilt-mounted, Ceiling-mounted	
Ambient Conditions	Temperature	0 to 45 °C
	Humidity	20 to 80%RH (Non-Condensing)
	Vibration	Less than 4.9m/s <sup>2</sup> (0.5G)
	Altitude	1000 m or less
Others	<ul style="list-style-type: none"> <li>Free from explosive or corrosive gas and liquid.</li> <li>Free from electrical noise.</li> <li>Free from strong magnetic fields.</li> </ul>	
Power Requirements	1KVA	
Controller	YRC1000/YRC1000micro	

Type	Controller	Model	Note
YR-1-06VX7-A00	YRC1000	GP7/AR900	STANDARD
	YRC1000micro	GP7	
YR-1-06VX7-B00	YRC1000	GP7/AR900	ANTI-CORROSIVE COAT
	YRC1000micro	GP7	

Notes: \*1 Repeatability is conformed to ISO 9283.  
 \*2 When the manipulator is installed on a tilt or a wall, the motion of S-axis will be limited.  
 \*3 The manipulator is in the home position.

Note:  
 1. All rights reserved.  
 2. Please note that the data is subject to be deleted without advance notice.  
 3. No warranty is given in relation to the data including the specification.  
 4. We are not responsible for any damages or loss caused by the use of the data.

FOR STUDY PURPOSE ONLY



Reference Drawing

TITLE MOTOMAN-GP7/AR900  
 DIMENSION DIAGRAM

DRWN DATE '16.08.17  
 DWG.NO. HW1384164

SIZE A3